



Thanks to our Festival & Events Sponsors



Thanks to carnival delivery partners



Participating Groups include:

Ashford Multicultural Network, **Pride Ashford**, Sk8side, **Victoria Road Primary School**, East Stour Primary School, **Phoenix Community Primary School**, Kennington CE Academy, **St Mary's CoE Primary School**, The Wyvern School, **EKC Ashford College**, Ashford School, **Samba Pelo Mar**, Drum & Ink, **Liv2Dance & TheatreTrain**, Lumina Dance Company, **Future Dance**, The Ashford Pantomime, **The Ashford Theatre Society**, Pilgrims Hospices, **Ashford Rotary Club**, Ashford Museum, **JVyoU** and many more.

Please give us your feedback

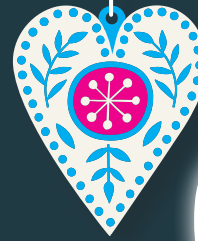


All information correct at the time of going to print

For more information visit loveashford.com



FREE EVENT



Ashford's CARNIVAL OF THE BAUBLES



SATURDAY 23RD NOVEMBER 2024

JOIN US FOR A WHOLE DAY OF FAMILY FESTIVE FUN

ILLUMINATED PROCESSION STARTING FROM THE LOWER HIGH STREET AT 5PM



Welcome to Ashford Carnival of the Baubles 2024

We hope you enjoy our full day of **FREE** festive fun for the whole family including a makers market, craft activities, and live music and performances at the Bandstand and Elfwick Place. Then at 5pm, please line the pavements along the carnival route to witness the special Ashford themed bauble parade, led this year by a giant Fire Bird!

ROUTE REVERSAL: This year's parade route has been reversed - starting in the Lower High Street at 5pm, and working its way down to Elwick Place.

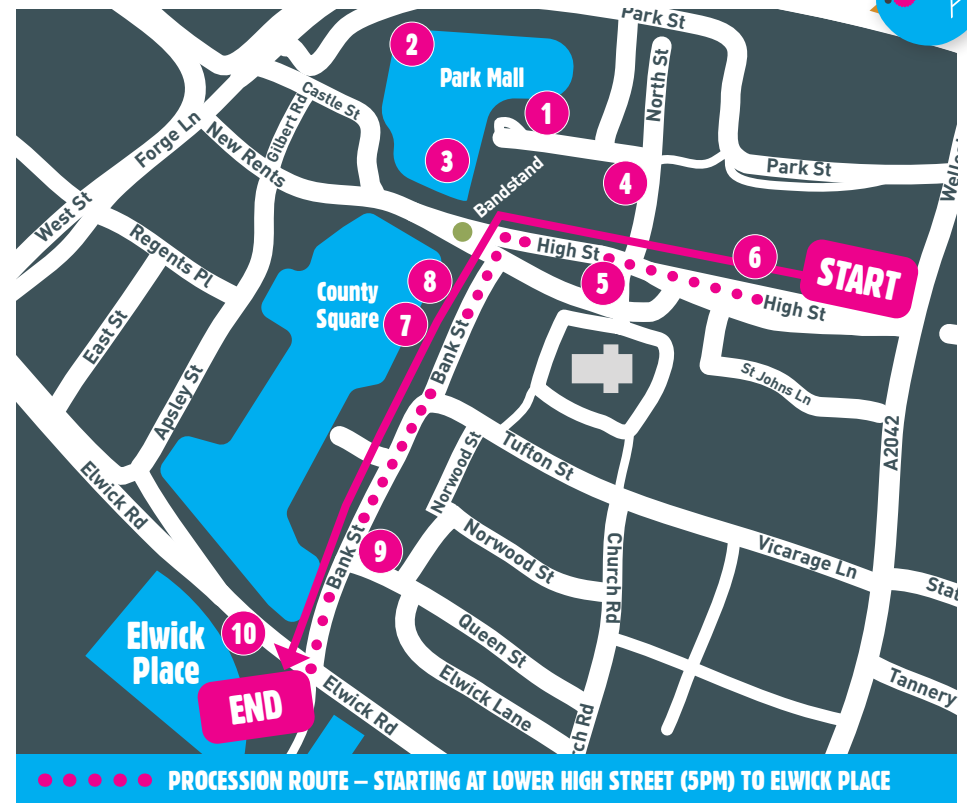


Event Times Saturday 23rd November

09:30am-12:30pm	St Mary's Church: Christmas Fayre
10:00am-7:00pm	Upper High Street & Park Mall: Festive Makers Market
10:00am-4:00pm	Upper High Street & Park Mall: Made in Ashford Craft Activity
12:00pm-4:00pm	Bandstand: Performances by The Rotary Club & Ashford Community Choir Simia Circus Ashford Pantomime Ashford Rock Choir JVyoU
2:00pm-6:00pm	Elfwick Place: Festive children's activities, including the new Elf Passport, food & drink stalls, Father Christmas Meet & Greet, and performances by Lumina Dance Co Liv2Dance & TheatreTrain Towers School
5:00pm-6:30pm	Town Centre: Carnival of the Baubles Parade
7:15pm-10:00pm	Revelation Ashford: A Christmas Carol (ticketed)

All information correct at the time of going to print

Buses from Bank Street will be temporarily relocated to Vicarage Lane between 4pm – 7pm



Lantern Window Trail starting from Thursday 28th November

- | | |
|-----------------------------|------------------------|
| 1. Liv 2 Dance | 6. The Glasshouse |
| 2. The Little Teapot | 7. Bucksford Law |
| 3. The Craftship Enterprise | 8. Salata |
| 4. The Beehive | 9. Low Key Tap Room |
| 5. Willow & Green | 10. The Ashford Cinema |



All information correct at the time of going to print

For more information visit loveashford.com